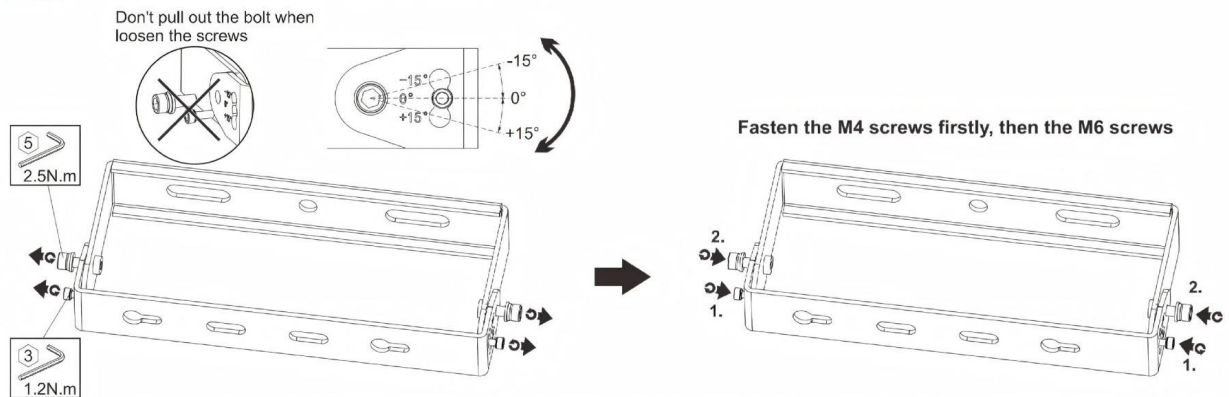


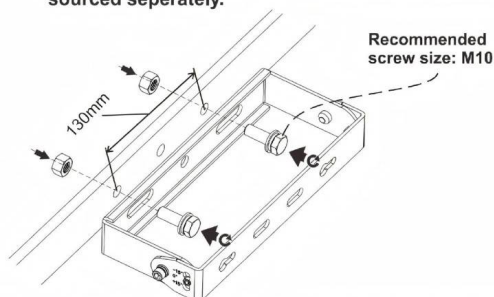


- Installation and wiring of luminaire must be in accordance with all applicable local codes.
- Installation, inspection, and maintenance of luminaires should be performed by a qualified electrician.
- DO NOT make or alter any open holes in the luminaire. Do not modify the luminaire.
- DO NOT install damaged product.
- Make sure electrical power is OFF before and during installation and maintenance.
- Make sure the equipment is properly grounded.
- Make sure the supply voltage is same as the rated fixture voltage.

**1. ✖ Rotate the bracket to suitable angle before installation**



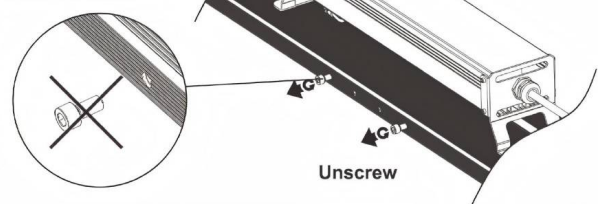
**2. ✖ This screw is not an included accessory and need to be sourced separately.**



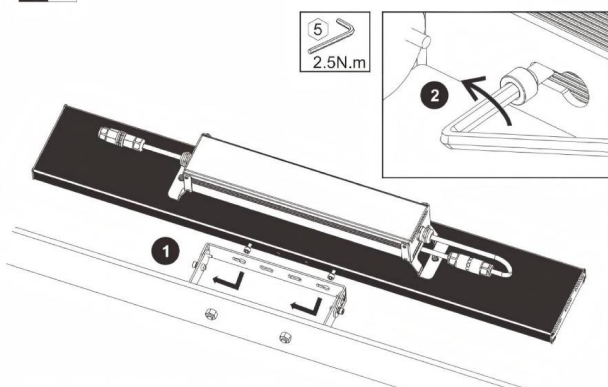
**3. ✖**



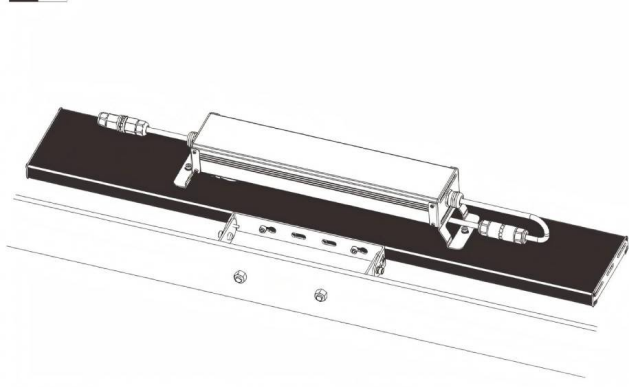
Don't pull out the bolt when loosen the screws



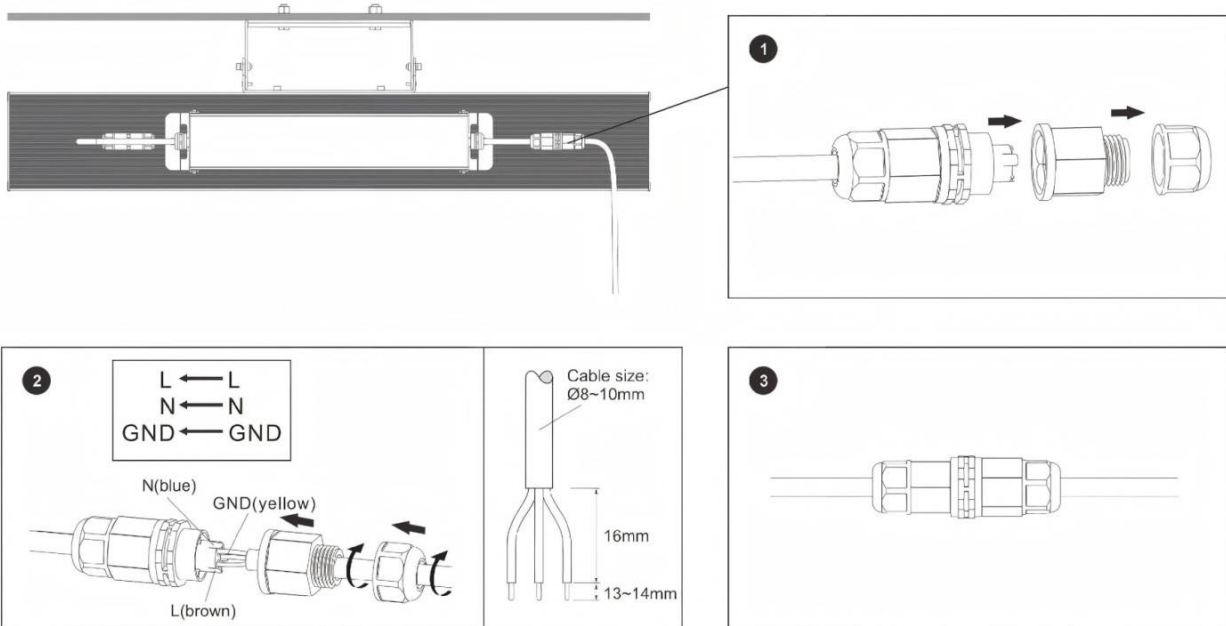
**4. ✖**



**5. ✖**



### Connect Wires

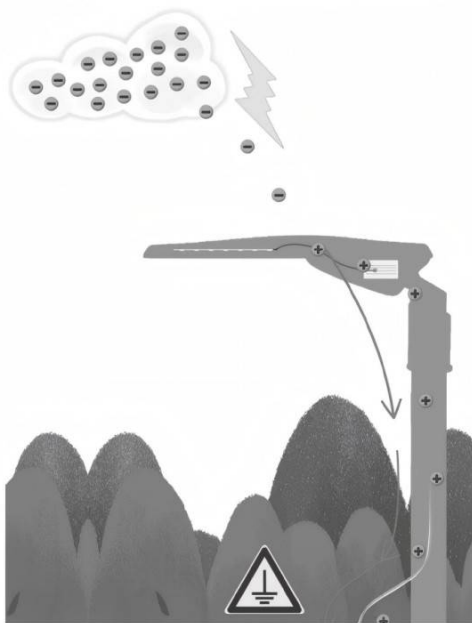


### Precautions for Outdoor Lighting

Lightning is a common natural phenomenon. When the accumulation of electric charge in the thundercloud to a certain degree, air breakdown will occur to cause electrostatic discharge between the clouds, or between the cloud and the earth. Normally there are direct lightning and induction lightning, most LED luminaires damage caused by induction lightning, such as electrostatic induction or magnetic field induction.

Below pretreatment can reduce lightning hazard, and extend luminaire lifetime.

#### 1. LED luminaire should be effectively grounded



With effective grounding, the electric charge can be introduced to ground quickly

#### 2. Install surge protector in power distribution box



The SPD can absorb most surge energy before luminaire